



SPRINTER 16 Owner's Manual

Table of Contents

1. Precautions.....	3
2. Sprinter 16 Structure.....	4
3. Sprinter 16 Assembly.....	5-7
4. Operation.....	8 - 15
5. Daily Maintenance.....	16 - 23
6. Warranty	24 - 28



1. Note: the product pictures are for illustration purposes only. These pictures may not reflect the exact look of the actual product. Specifications are subject to change without notice.

Before using the Sprinter 16, please read this manual carefully and inspect whether the electric balance bike is in good condition, to ensure children's safety. If there are any problems, please contact the dealer immediately.

2. Children are required to use the Sprinter 16 under the supervision of parents or adults.

3. The Sprinter 16 should be stored in a dry, well ventilated place. Do not rinse the bike with water. It is recommended to wipe it with a dry cloth and spray cleaners when necessary.

4. Please comply with local laws or regulations; Please slow down and increase braking distance on a rainy/snowy day or on slippery surfaces, to ensure the safety of the rider.

5. Non-professional maintenance persons are prohibited from disassembling and replacing parts.

6. Do not use this bike to do stunt riding.

7. Please inspect and ensure all hardware is tight before riding.

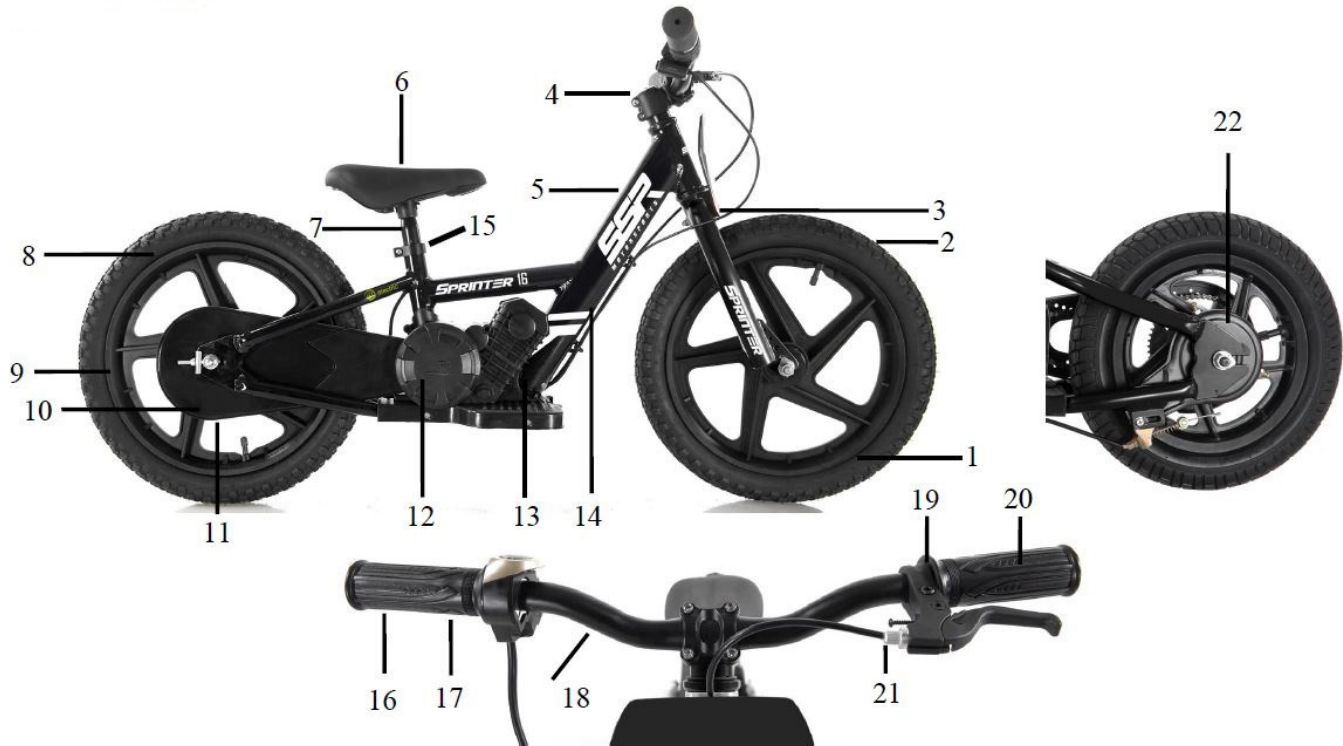
8. The controller is equipped with an overload protection function. It will cut off the power automatically once overloaded. When the power returns to normal, the power will return.

9. When charging the bike it cannot be ridden, please disconnect the charger when charging is complete to avoid the risk of electric component damage.

10. Please turn off the power when you get off of the Sprinter 16 or if you are pushing it, in case the rider pushes the throttle unintentionally, the bike will start suddenly and you could get hurt.

11. Never operate the Sprinter 16 if the side covers and/or chain cover are not installed. Do not allow hands, feet, body parts, clothing or other similar items to come into contact with any rotating or moving parts.

Sprinter 16 Structure



1. Front Wheel 2. Tire 3. Front Fork 4. Gooseneck 5. Frame 6. Seat 7. Seat Post 8. Inner Tube 9. Rear Wheel 10. Chain Adjuster 11. Chain Cover 12. Side Cover 13. Controller 14. Battery 15. Seat Post Release 16. Right Grip 17. Throttle 18. Handlebar 19. Left Brake Lever 20. Left Grip 21. Brake Cable 22. Rear Brake

Sprinter 16 Assembly

1. Remove the bike from the carton, remove the packing and attach the front wheel to the front fork using the 13mm-15mm wrench.



Attention:

1.1 When installing the front wheel with the wrench, pay attention to the gap on either side of the wheel, it should be symmetrical.

1.2 Make sure the locking washer is hooked to the front fork to prevent rotation of the hub in the fork. The wheel should be centered.

Sprinter 16 Assembly

2. Install the front number plate

Remove the bolt attached to the front fork, install the front number plate and secure it using the M6 nut and supplied tools.



3. Set the brake lever angle, it should sit at 45° horizontally.



Operation

1. Always wear personal protective equipment like a helmet, protective goggles, sneakers, gloves, elbow pads, and knee pads etc.
2. Throttle/Display instruction



- 2.2. Press the power switch button, the battery indicator light will turn on;
Press the power switch button again, and the battery indicator light will turn off;
- 2.3. Use your hand to turn the throttle to control the power output.

3. Removal of the battery:

3.1. First make sure the power switch is off. Then lay the Sprinter16 gently on its side. Open the rubber dust shield on the bottom of the battery and rotate the key in the direction of the arrow to unlock it.

3.2. Holding both sides of the battery, pull it down to remove it from the frame.



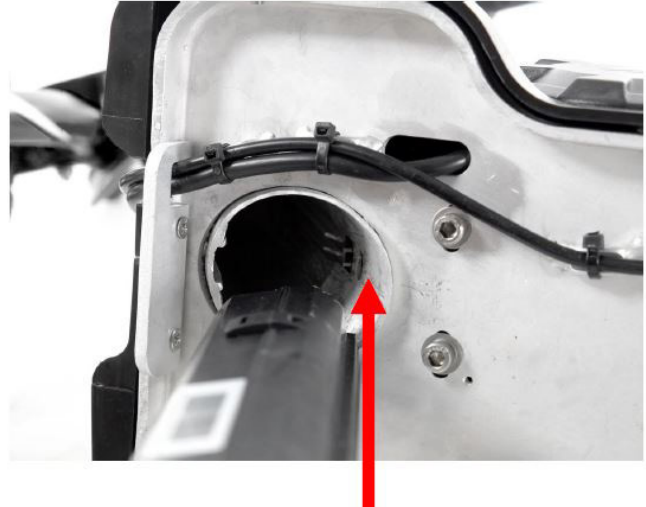
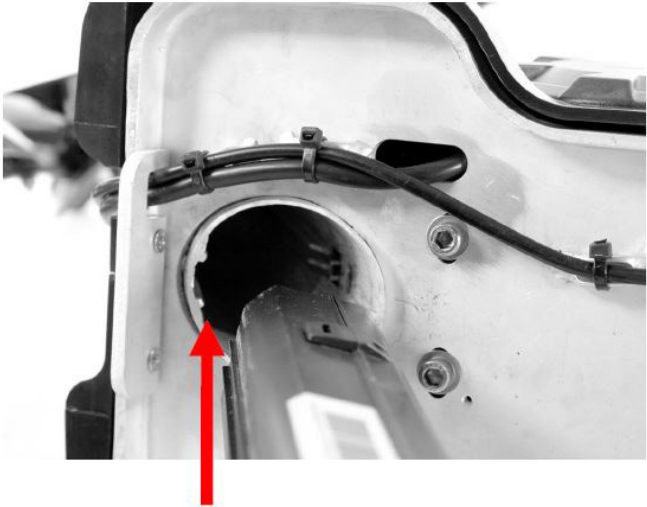
3.1



3.2

Operation

3.3. To reinstall the battery push it into the frame along the track, pay attention to the direction of the battery.



the battery must run along the track to be properly installed

3.4. Once the battery is fully installed, lock the key to secure it and close the rubber dust cover to protect the bottom of the battery.



Operation

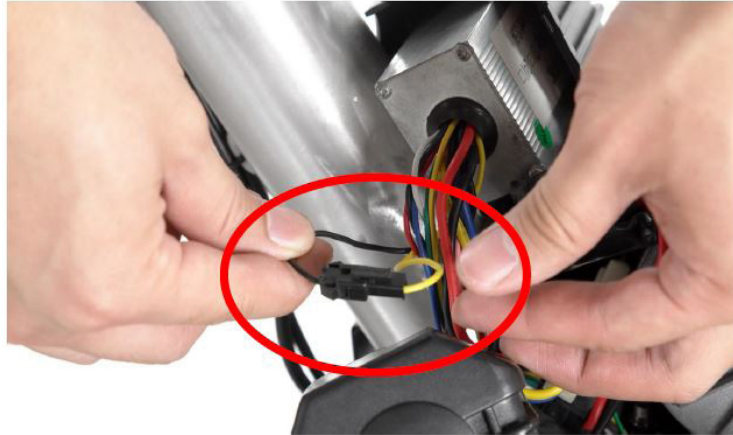
4. Speed Conversion Instructions:

In order to protect children and prevent the riding speed from being too fast, the figure below shows the controller plug-in connection speed limiting line. The plug-in speed limiting line is disconnected or connected to turn on either of the two speed modes:

Mode 1: The speed limiting line is disconnected, the Sprinter 16 top speed is 11MPH.

Mode 2: The speed limiting line is connected, the Sprinter 16 top speed is 6 MPH.

The connection/disconnection of this speed change switch requires an adult to perform.

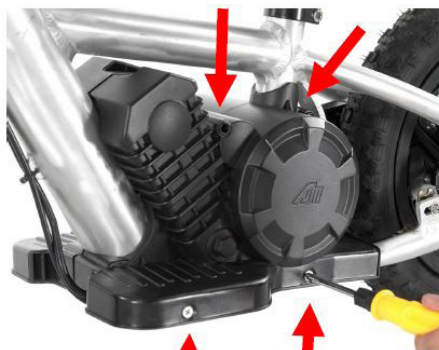


5. Speed Conversion Instruction Details:

5.1.1 First, turn off the power, then remove the left frame cover using a phillips screwdriver and pull out the speed limiting line.

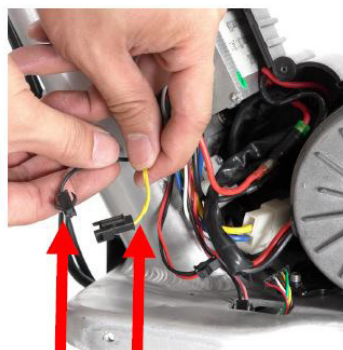
5.1.2 Disconnect or reconnect the connector, then check to see if the desired speed has been achieved.

5.1.3 Once the desired speed has been achieved, replace the connector into the housing and reinstall the left frame cover using the screws you previously removed.

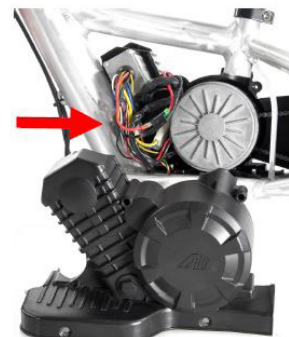


remove the 4 pcs screw

5.1.1



Black Yellow



put the cable in order

5.1.3

Operation



Note: Be sure to install the brake and display cables into the slot of the left frame cover

6. Start-up process: sit, push, push the throttle, brake, practice (Always wear personal protective equipment and operate the unit under the supervision of an adult).

Unpowered training:

- 6.1. Turn off the power.
- 6.2. Adjust the seat cushion position according to the height of the rider.
- 6.3. Use your feet on the ground to promote learning and balance.
- 6.4. Practice gliding and practice to control the unit while turning.
- 6.5. Use the brakes to safely stop while maintaining balance.

Electric mode:

- 6.6. Turn on the power switch.
- 6.7. Turn the display to normal.
- 6.8. Place your feet on the ground, let the rider slowly move forward and practice pressing the throttle to slowly accelerate.
- 6.9. Let the rider practice opening and closing the throttle and safely operating the brake to stop.
- 6.10. When the rider is skillful in controlling the throttle and braking skills, place your feet on the pedals.
- 6.11. Please keep a safe distance between the rider and any obstacles. Pay attention to avoiding pedestrians and pay attention to controlling the speed.
- 6.12. Pay attention to other vehicles where you ride and turn off the power before you get off of the Sprinter16.

Daily Maintenance

1. Chain Adjustment: adjust the locknut to adjust the drive chain. Make sure the adjustments are made evenly to the adjusters on both sides of the wheel.



2. After riding the bike for a period of time, if there is any wheel wobble, tighten the wheel lock nut on either side of the wheel as shown in the pictures below.



Lock Nut



Lock Nut



Daily Maintenance

3. Brake adjustment: make large adjustments to the brake cable at the rear brake as shown.



large brake cable adjustments

Continued:

make small adjustments to the brake cable at the brake lever. Loosen the locknut, turn the cable adjuster bolt to make your adjustment, then tighten the locknut when the adjustment is complete.



small brake cable adjustments

Daily Maintenance

4. Charging the battery: open the waterproof cover of the charging port, plug the end of the charger into the charging port and then plug the charger into the wall socket. When disconnecting, first remove the connection at the wall socket, then remove the end of the charger cable from the charging port.



5. Adjusting the seat height: using the allen wrench, loosen the seat clamp and adjust the seat. DO NOT adjust the seat post above the security line for safety.



Daily Maintenance

6. Lubrication is an important part of the maintenance of your electric balance bicycle. The front axle, rear axle, and sprocket should be scrubbed and lubricated every month.

Maintenance Item	Maintenance Cycle	Tools And Remark
Head Parts Set	One Year	Grease
Front and Rear Axels	One Year	Grease
Chain	Every Month	Chain Lube
Battery	Two Months	Recharge the battery every two months if in storage for a long time
Tire Pressure	Every Month	The tires should be inflated with compressor equipment if the air pressure is low (10 PSI Front & Rear)

- 6.1. Do not drain the battery completely every time, please charge the battery when the display indicates the red light, which can increase the life cycle of the battery.
- 6.2. Please clean the Sprinter 16 regularly, to ensure safe operation by children and also to keep the bike in the best operational condition.
- 6.3. Please always check the performance of the brake before use and adjust it as needed.

Attention: please increase the braking distance when riding on wet surfaces or riding downhill.
- 6.4. After each use, please charge the battery to keep it in the best condition.
- 6.5 The front and rear wheel locknuts should be checked and tightened regularly to prevent the wheels from rocking or wobbling.

Warranty

ELECTRIC BALANCE BIKE LIMITED WARRANTY PERIODS

All warranty periods begin on the date that the Electric Balance Bike is first delivered to you, or placed into dealer service, such as in the case of a dealer demonstrator. Please consult the following list:

Electric Balance Bike

Frame: 1 Year

Electrical Components: (including: Controller, and Motor) 90 Days

Battery: 90 days

WHAT IS NOT COVERED

Labor to replace warranty parts is not covered by the warranty, you will responsible for those costs.

Routine service or periodic maintenance such as tune-ups and service checks are your responsibility to pay for and have performed, and are not covered by this warranty.

Repairs to your Electric Balance Bike for failures that occurred after the expiration date of the warranty period.
Damage to the Electric Balance Bike that is not our fault, such as damage caused by accidents or carelessness.
Damage caused by misuse, abuse, or unreasonable or improper Electric Balance Bike operation, such as intentional burning or spinning of the front/rear tire, shifting gears improperly, overloading, operating the Electric Balance Bike with the front/rear wheel aloft. Damage caused by negligence, such as operation of the Electric Balance Bike with flat tires, damaged components, improperly adjusted derailleur, or damaged electrical components.

Warranty

Damage caused by alterations or modifications not approved by SSR Motorsports, such as use of non-SSR Genuine Parts or Accessories.

Damage caused by modifications that would change the original Electric Balance Bike specifications including, without limitation, modifications of any electric motor, electric motor controller, wiring or lighting components.

Damage to the Electric Balance Bike from competition, such as racing

Damage to the Electric Balance Bike that is caused by insufficient or improperly performed maintenance or repairs, such as not performing maintenance at the intervals required in the Owner's Manual, or the use of chemical cleaners that damage the finish of the Electric Balance Bike.

Damage to the Electric Balance Bike caused by improper storage, such as weathered or faded finishes, rusting or corrosion of metal components, wearing or deterioration of components subject to normal wear during normal Electric Balance Bike operation, such as tires, brake pads or linings, and drive chains and sprockets.

LIMITATIONS

This warranty does not cover incidental or consequential damage, such as damage to personal gear or property, rental of a replacement Electric Balance Bike, transportation of your Electric Balance Bike to an authorized dealer for repair, expenses incurred from the loss of use of the Electric Balance Bike, or your inconvenience.

SOME STATES DO NOT ALLOW THE EXCLUSION OR LIMITATION OF INCIDENTAL OR CONSEQUENTIAL DAMAGES, SO THE ABOVE LIMITATION OR EXCLUSION MAY NOT APPLY TO YOU.

Warranty

YOUR RESPONSIBILITIES

You must operate and maintain your Electric Balance Bike in a normal manner, following the recommendations described in the Electric Balance Bike's Owners Manual. Depending upon your application or climate, some Electric Balance Bike may require more frequent or additional maintenance than that described in the Owners Manual. While an Authorized SSR Electric Balance Bike Dealer is trained and equipped to perform servicing of your Electric Balance Bike, periodic maintenance may be performed by anyone qualified to do so.

OBTAINING WARRANTY REPAIRS

If your Electric Balance Bike requires a warranty repair, it is your responsibility to take your Electric Balance Bike to an Authorized SSR Electric Balance Bike Dealer for repair. Your dealer will perform the necessary repairs or adjustments within a reasonable amount of time, and will provide you with a copy of the repair order for your records.

Any parts replaced under coverage of this limited warranty become the property of SSR Motorsports. If you should suffer a second failure of the same item on your Electric Balance Bike during the warranty period, we ask that you immediately inform your servicing dealer or SSR Motorsports of that circumstance.

SPECIAL ASSISTANCE

Should you have a question or problem concerning the limited warranty or the servicing of your Electric Balance Bike, please follow these procedures, in the following sequence, for the fastest possible response:

1. Bring your problem to the attention of the dealership's Service Manager, and allow the manager the opportunity to resolve your concern.

Warranty

2. If you still have a concern, fully explain the situation to the General Manager or Owner of the dealership. Ask for their cooperation and assistance in resolving your concerns. These individuals are in the very best position to assist

you, as they are vitally concerned with your satisfaction and future business.

3. If you request us to do so, SSR Motorsports will assist you by contacting the authorized SSR dealer regarding any inquiry related to service or warranty concerns. We will speak to the Owner, General Manager, Service Manager or Technician to learn all of the relevant facts, before making any decisions. This process will be performed as quickly as possible; however a certain amount of time must be allowed for us to thoroughly investigate the facts of the situation. When contacting SSR Motorsports, we urge you to write rather than call, so that you can provide us with a detailed description of your concern. You may also call the SSR Motorsports Customer Service Department.

The address and phone numbers are:

SSR Motorsports

Electric Balance Bike Customer Relations

12825 Alondra Blvd.

Norwalk, CA 90650-6838

www.ssrmotorsports.com

info@ssrmotorsports.com

We will require some information to investigate your problem: The model, frame number, mileage, event dates, dealer name and the dealer personnel consulted, your problem or question, and any modifications or accessories your Electric Balance Bike has that might be related to the problem.

Your State may require that you notify SSR Motorsports of a problem in writing prior to seeking assistance through legislated remedies, such as under Repair/Replace laws.

If so, please use the above address.

Warranty

SSR MAKES NO PROMISES OR WARRANTIES OTHER THAN THOSE PROMISES MADE IN THIS LIMITED WARRANTY. ANY IMPLIED WARRANTY OF MERCHANTABILITY OR FITNESS FOR A PARTICULAR PURPOSE SHALL BE LIMITED TO THE DURATION OF THIS WARRANTY. SOME STATES DO NOT ALLOW LIMITATIONS ON HOW LONG AN IMPLIED WARRANTY LASTS, SO THE LIMITATIONS MAY NOT APPLY. THIS WARRANTY GIVES YOU SOME SPECIFIC RIGHTS AND YOU MAY ALSO HAVE OTHER RIGHTS, WHICH VARY, FROM STATE TO STATE. SSR DOES NOT AUTHORIZE ANY PERSON TO CREATE FOR IT ANY OTHER WARRANTY, OBLIGATION, OR LIABILITY IN CONNECTION WITH THESE PRODUCTS.